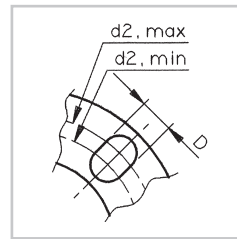
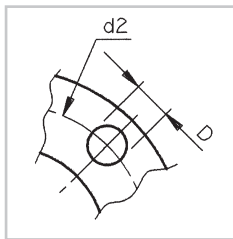
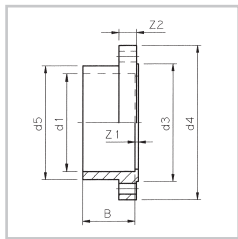
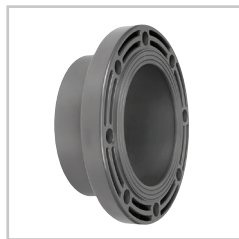


FIXED FLANGE

Lijmflens
Klebeflansch
Bride fixe
Flangia fissa
Brida fija



TYPE A

TYPE B

ART.CODE	d1	d2	d3	d4	d5	Z1	Z2	B	NXD	NORM	TYPE	QUANTITY
716418	75	139.5/144	106	185	91	3	19	44	4x19	..	B	24
15007690	90	152.5/159	125	200	108	5	20	51	8x19	..	B	15
716425	110	181/190.5	150	220	131	5	22	61	8x19	..	B	8
716421	125	190	166	235	148	5	26	69	8x18		A	8
15007618	140	215	184	250	165	5	26	76	8x23	..	A	6
716419	160	240	209	285	188	5	28	86	8x24	..	A	4
716420	200	270	248	315	232	5	36	106	8x22	...	A	3
15007264	225	295	260	340	248	7	36	119	8x22	.	A	3
15007620	250	325	303	370	274	7	36	131	8x22	...	A	2
15007692	280	350	328	395	306	9	36	146	12x22	.	A	2
15007622	315	400	378	445	342	7	36	164	12x22	.	A	1

Connecting dimension according to...

Bevestigingsmaat volgens...

Anschlußmasse zufolge...

Measure de assujettir suivant...

Misura di attaccare secondo...

Medida de sujetar según...

- ISO/DIN 2501 PN10
- .. ISO/DIN 2501 PN10 / ANSI B16.5
- ... ISO 2536 PN10

