



### Application

- To transfer clean water with liquid temperature between 0°C and 40°C
- Applicable in water supply and drainage for factories, mines, municipal facilities as well as field irrigation, etc.

### Features

- New unique design with ergonomic feature
- Portable and compact pump frame
- High quality motor with excellent performance and long service life
- Impeller designed with high efficient hydraulic system
- Low fuel consumption

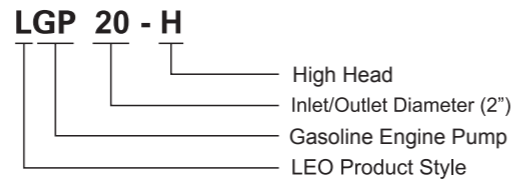
### Pump

- Anti-rust cast iron diffuser
- Max. suction: 6 m/120 s
- Inlet/outlet: 50 mm/2 x 38 mm+1 x 50 mm

### Engine

- Single cylinder, 4-stroke, Air-cooled
- Max. power: 6.5 HP
- Displacement: 196 cc
- Rated speed: 3600 rpm

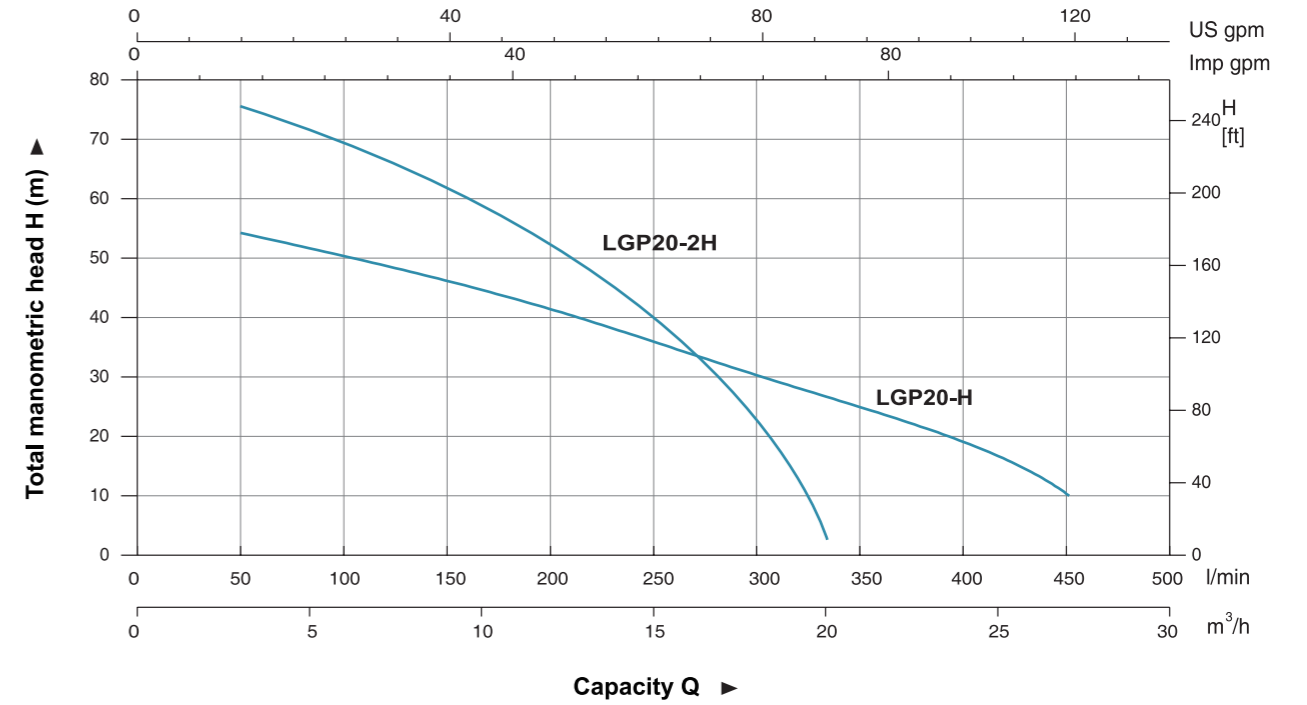
### Identification Codes



### Technical Data

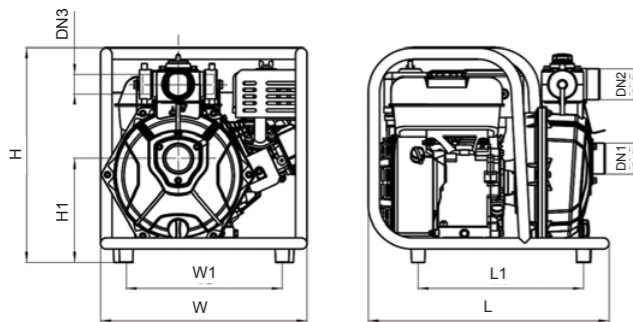
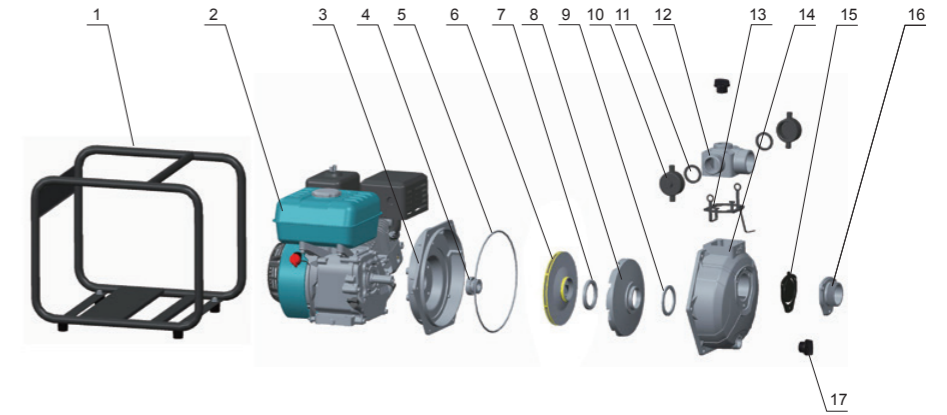
MODEL	POWER HP	Q (m³/h) Q (l/min)	H (m)						
			0	5	10	15	20	25	30
LGP20-H	6.5	83.3	55	52	44.3	36	27	17	2.5
LGP20-2H	6.5	166.7	80	77	63	42	5	-	-

### Hydraulic Performance Curves



### Materials Table

No.	Part	Material
1	Frame	Steel
2	Engine	
3	Bracket	Aluminum
4	Mechanical seal	Carbon/Ceramic
5	O-ring	NBR
6	Impeller	Aluminum
7	Seal ring	NBR
8	Diffuser	HT200
9	Seal ring	NBR
10	Pipe blanking cap	PP
11	Seal ring	NBR
12	Outlet	Aluminum
13	Gasket	NBR
14	Pump body	Aluminum
15	Non-return valve	NBR
16	Inlet	Aluminum
17	Filling plug	PA6



### Dimension

Model	DN1	DN2	2×DN3	L (mm)	W (mm)	H (mm)	L1 (mm)	W1 (mm)	H1 (mm)
LGP20-H	2"	2"	1.5"	463	397	412	318	300	200
LGP20-2H	2"	2"	1.5"	463	397	412	318	300	200

### Package Information

Model	GW (Kgs)	L (mm)	W (mm)	H (mm)	Quantity (PCS/20 TEU)
LGP20-H	22.22	470	412	432	340
LGP20-2H	22.24	470	412	432	340

