

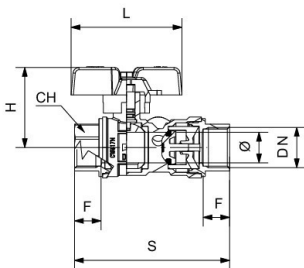


## RIV 5164

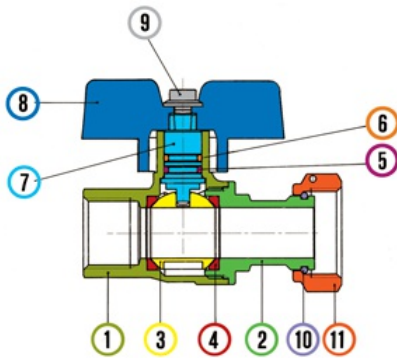
Water meter outlet ball valve F/F with full bore check valve and 3 intakes  
 full bore  
 aluminium sealing butterfly handle

### Tech drawings and tables

DN	Code	Ø	H	S	L	F	PNKGP/box
3/4"	025164000005	20	52,5	102	73	17	16
1"	025164000007	25	57	122	73	22	16



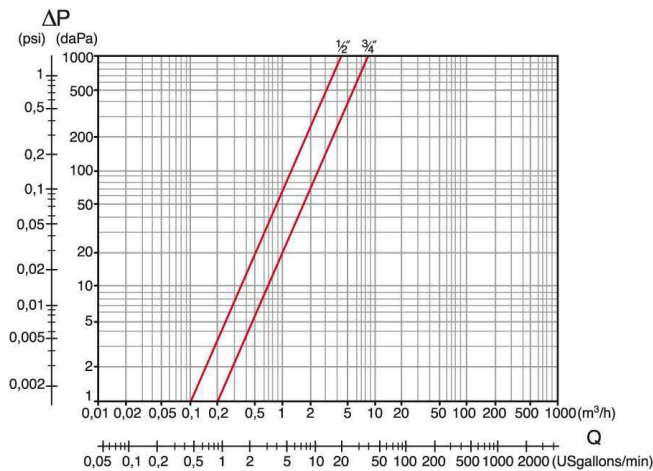
## Technical data



Materials			
1	Body	Brass	Nickel-plated
2	Body end	Brass	Nickel-plated
3	Ball	Brass	Chrome-plated
4	Seats	PTFE	
5	O-Ring	FKM	
6	O-Ring	NBR	
7	Stem	Brass	
8	Butterfly handle	Aluminium	Green
9	Screw	Steel	Zinc-plated
10	Seeger	Stainless Steel	Nickel-plated
11	Swivel nut	Brass	

<b>Connections</b>	Female ISO 7/1Rp (parallel), Male ISO 7/1R (tapered), screwed ring ISO 228/1
<b>Limit</b>	-20°C (without liquid) +110°C
<b>Notes</b>	The max.working pressure (PN) means at a room temperature of about 23°C.

## Pressure Loss Chart



## Temperature/Pressure

