

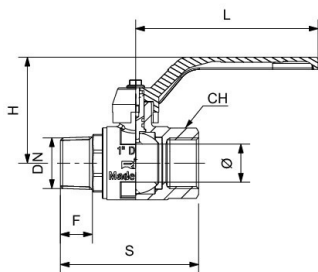


RIV 4380

Ball valve M/F heavy type
full bore
aluminium lever handle

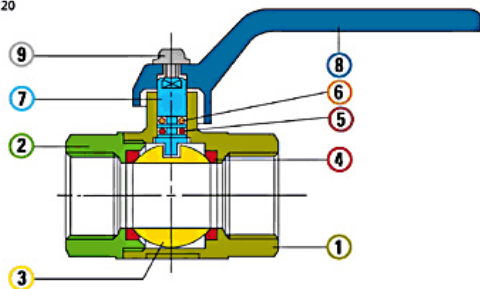
Tech drawings and tables

DN	Code	Ø	H	S	L	F	PN	KG	P/box
1/2"	024380000004	15	55	67	105	16	64	0,283	10
3/4"	024380000005	20	66	76	120	17,5	64	0,464	10
1"	024380000007	25	70	91	120	21	64	0,702	8
1"1/4	024380000008	32	83	101	135	22,5	50	1,105	6
1"1/2	024380000009	40	93	113	160	22,5	50	1,475	4
2"	024380000011	50	102	134	160	26,5	50	2,340	3



Technical data

Art. 4220



Materials

1	Body	Brass	CW617N	Nickel-plated
2	Body end	Brass	CW617N	Nickel-plated
3	Ball	Brass	CW617N	Chrome-plated
4	Seats	P.T.F.E.		
5	O-Ring	FKM		
6	O-Ring	NBR		
7	Stem	Brass	CW614N	
8	Lever	Aluminium		Green
9	Screw	Steel		Zinc-plated

Connections

F/F: ISO 7/1Rp (parallel) - M/F: male ISO 7/1R (tapered), female ISO 7/1Rp (parallel)

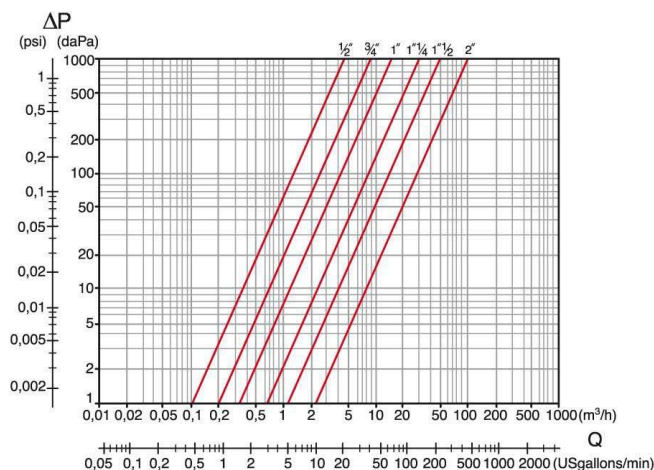
Limit

-20°C (without liquid) +150°C

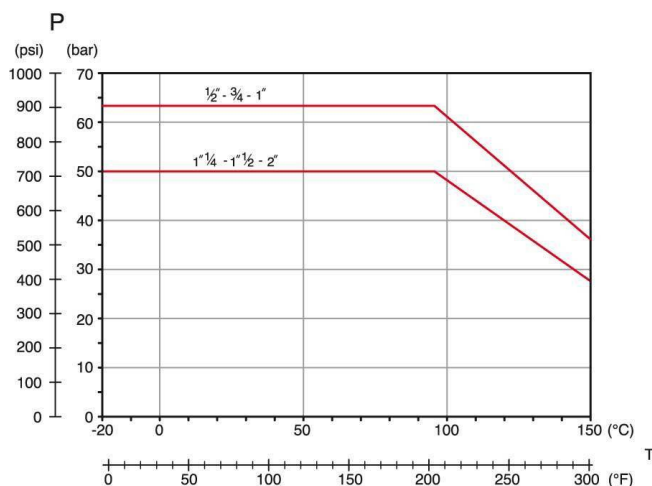
Notes

The max.working pressure (PN) means at a room temperature of about 23°C.

Pressure Loss Chart



Temperature/Pressure



Kv & Cv Coefficients

Size	Kv	Cv
1/2"	15,5	17,9
3/4"	31,0	36,0
1"	52,0	60,0
1"1/4	100,0	116,0
1"1/2	180,0	208,0
2"	350,0	405,0