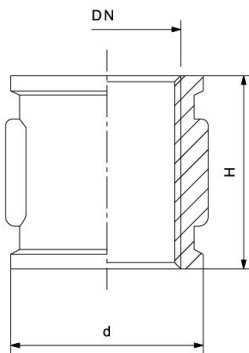




## RIV 3410

Sleeve F/F

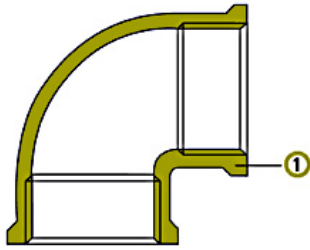
### Tech drawings and tables



DN	Code	H	PN	KG	P/box
1/4"	033410000002	24,5	10	0,026	40
3/8"	033410000003	29	10	0,037	25
1/2"	033410000004	32	10	0,059	30
3/4"	033410000005	34	10	0,072	20
1"	033410000007	42,5	10	0,135	12
1"1/4	033410000008	44,5	10	0,186	12
1"1/2	033410000009	51,5	10	0,257	10
2"	033410000011	62,5	10	0,401	10

## Technical data

Art. 3400



### Materials

1 Body Brass CW617N

### Connections

ISO 228/1

### Limit

-10°C (without liquid) +100°C

### Notes

The max. working pressure (PN) means at a room temperature of about 23°C.