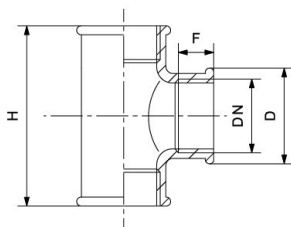




RIV 3420

"T"-fitting F/F/F

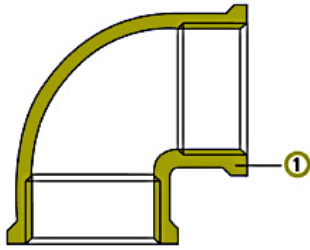
Tech drawings and tables



DN	Code	H	F	PN	KG	P/box
1/4"	033420000002	38	11	10	0,052	20
3/8"	033420000003	43	11	10	0,076	20
1/2"	033420000004	43,5	11	10	0,088	15
3/4"	033420000005	51	12	10	0,122	12
1"	033420000007	65	15	10	0,217	6
1"1/4	033420000008	86	17	10	0,400	6
1"1/2	033420000009	96	19	10	0,544	5
2"	033420000011	117	24	10	0,915	6

Technical data

Art. 3400



Materials

1 Body Brass CW617N

Connections

ISO 228/1

Limit

-10°C (without liquid) +100°C

Notes

The max. working pressure (PN) means at a room temperature of about 23°C.