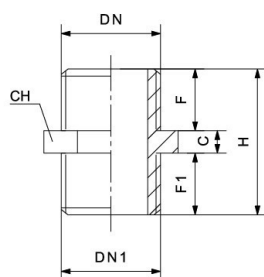




RIV 3430

Nipple M/M

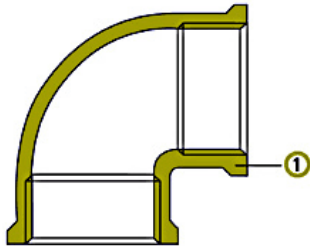
Tech drawings and tables



DNxDN1	Code	H	F	C	F1	PN	KG	P/box
1/4" x 1/4"	033430000002	24	9,5	5	9,5	10	0,015	50
1/4" x 3/8"	033430000120	25,5	10	4,5	11	10	0,021	40
3/8" x 3/8"	033430000003	26	10	6	10	10	0,023	40
3/8" x 1/2"	033430000147	27	10	5	12	10	0,036	25
1/2" x 1/2"	033430000004	28	11	6	11	10	0,034	50
1/2" x 3/4"	033430000187	27,5	10,5	5	12	10	0,050	15
3/4" x 3/4"	033430000005	28	12	6	12	10	0,051	30
3/4" x 1"	033430000230	37,5	14,5	7,5	15,5	10	0,096	20
1" x 1"	033430000007	36	15	6	15	10	0,078	15
1" x 1"1/4"	033430000272	45	19	6	20	10	0,142	10
1"1/4 x 1"1/4"	033430000008	45	19	7	19	10	0,153	15
1"1/4 x 1"1/2"	033430000312	55	23	9	23	10	0,261	10
1"1/2 x 1"1/2"	033430000009	57	24	9	24	10	0,289	10
1"1/2 x 2"	033430000350	55	24	7	24	10	0,305	6
2" x 2"	033430000011	61,5	26	9,5	26	10	0,434	6
2" x 2"1/2"	033430000393	58	25	8	25	10	0,501	6
2"1/2 x 2"1/2"	033430000013	59,5	25,5	8,5	25,5	10	0,494	1
3" x 3"	033430000014	62	26	10	26	10	0,701	1
4" x 4"	033430000016	68	28	12	28	10	1,401	1

Technical data

Art. 3400



Materials

1 Body Brass CW617N

Connections

ISO 228/1

Limit

-10°C (without liquid) +100°C

Notes

The max. working pressure (PN) means at a room temperature of about 23°C.