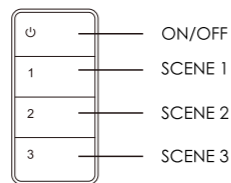


ADUOSMART ERIA

USER MANUAL WIRELESS SCENE SWITCH



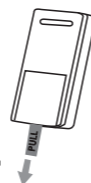
The Eria wireless scene switch is a battery-powered dimmer for ZigBee Light link and 3.0 certified lights: it controls your preferred lighting setting.



Important note:
Can be used without an Eria HUB but offers more options in combination with an Eria HUB

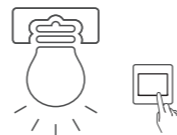
	Short press: ON / OFF, flash green Long press: When the paired lights are in the operating state, the green cycle flashes and the lights are gradually turned to the darkest, but they will not go out, and then the light will turn on to the brightest. Do this until the key is released and fixed in the current brightness.		Long press, Color loop
1	Short press, play the scene 1, flash green Long press, save the scene 1, flash green	1+2	Long press To touchlink with bulbs.
2	Short press, play the scene 2, flash green Long press, save the scene 2, flash green	2+3	Long press Connect to the gateway.
3	Short press, play the scene 3, flash green Long press, save the scene 3, flash green		Long press: Reset the bulb.
		1+3	Long press: Reset to factory settings.

1. Pull off the lid sticking out of the battery compartment.



For more information on installation and use please visit www.adurosmart.com/remotes.

2. To use without a control station, switch on the ZigBee lamp which you want to control.



4. If the touchlink is successful the soft white lamp will flash slowly 2 times, if you have touchlinked the color lamp successful then it will turn green.

DIMMING BULB



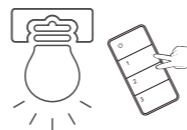
Flash 2 X

COLOR LAMP



Green light

3. Touch the lamp cover with the remote and keep pressing button 1 (symbol) + button 2 (symbol). The Eria soft white lamp will flash 2 times when it initiates the touchlink and a color lamp will flash green once. Make sure that you keep button 1 (symbol) + button 2 (symbol) pressed until a successful touch-link is confirmed as illustrated at step 4.



Connect with the ERIA hub

1A. Download the Adurosmart App from the Apple App Store or from Google Play or go to <http://adurosmart.com/adurosmart-app/>

Android

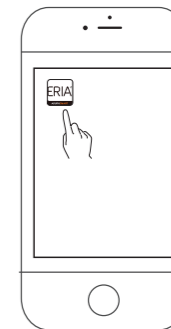


IOS

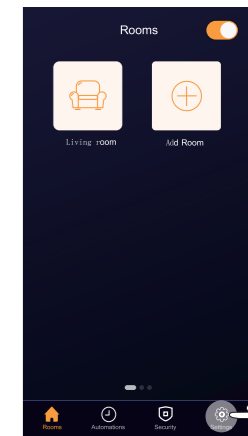


1B. If you have a **third party ZigBee compatible hub** then proceed to step 9.

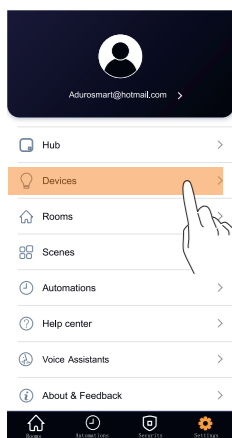
2. Open the Adurosmart Eria APP.



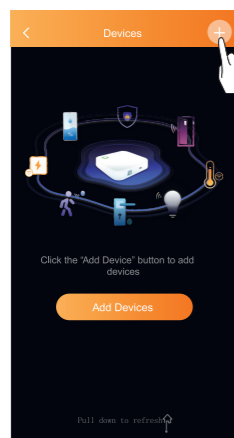
3. On the bottom right corner press on "Settings".



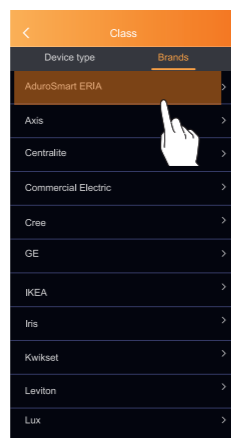
4. Select "Devices".



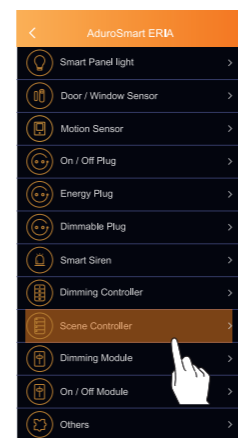
5. On the top right corner press on the "+" symbol then press on "Add device".



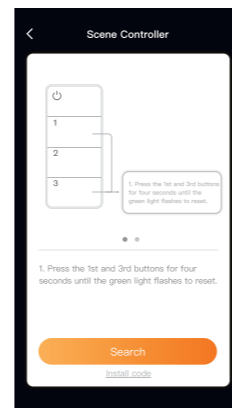
6. Press on "Brands" and then select "AduroSmart ERIA".



7. Press on "Scene Controller"

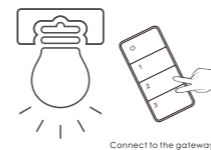


8. Proceed by pressing on "Search" to allow the ERIA hub to find the remote, the LED indicator on the hub will flash green this indicates that the hub is searching for new devices.



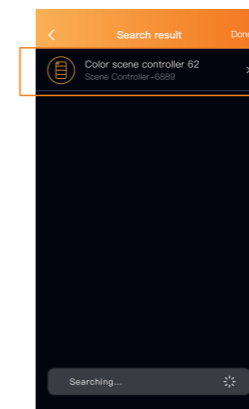
8B. If you have a **third party hub**, then this is the moment to **initiate the search from your Smart Home hub app**.

9. While the hub is searching press and hold button 2 (symbol) and 3 (symbol) on the remote for 10 seconds if the remote is paired successfully it will be confirmed by a green flash, when the remote has failed to pair the LED indicator will flash red.



Connect to the gateway.

10. When the remote has been found and paired successfully it will show up in your search results, press on "Done" to complete the process.



11. Troubleshoot

If you have followed the pairing instructions but you are still not able to connect your device then follow below instructions to reset the controller.

To reset the remote:

press and hold the 1 button (symbol) + 3 button (symbol) on the remote simultaneously for 10 seconds a **successful** reset will be confirmed by a **green flash** from the LED indicator, **failed** reset will be indicated by a **red flash**.



Reset to factory settings.

NEED HELP? CALL US

For troubleshoots, instruction video's or more information please visit us at www.adurosmart.com/faq

Chat with one of our support agents at www.adurosmart.com

The Netherlands: +31 523687532
Support@Adurosmart.eu



www.adurosmart.com/manuals/remotesceneswitch