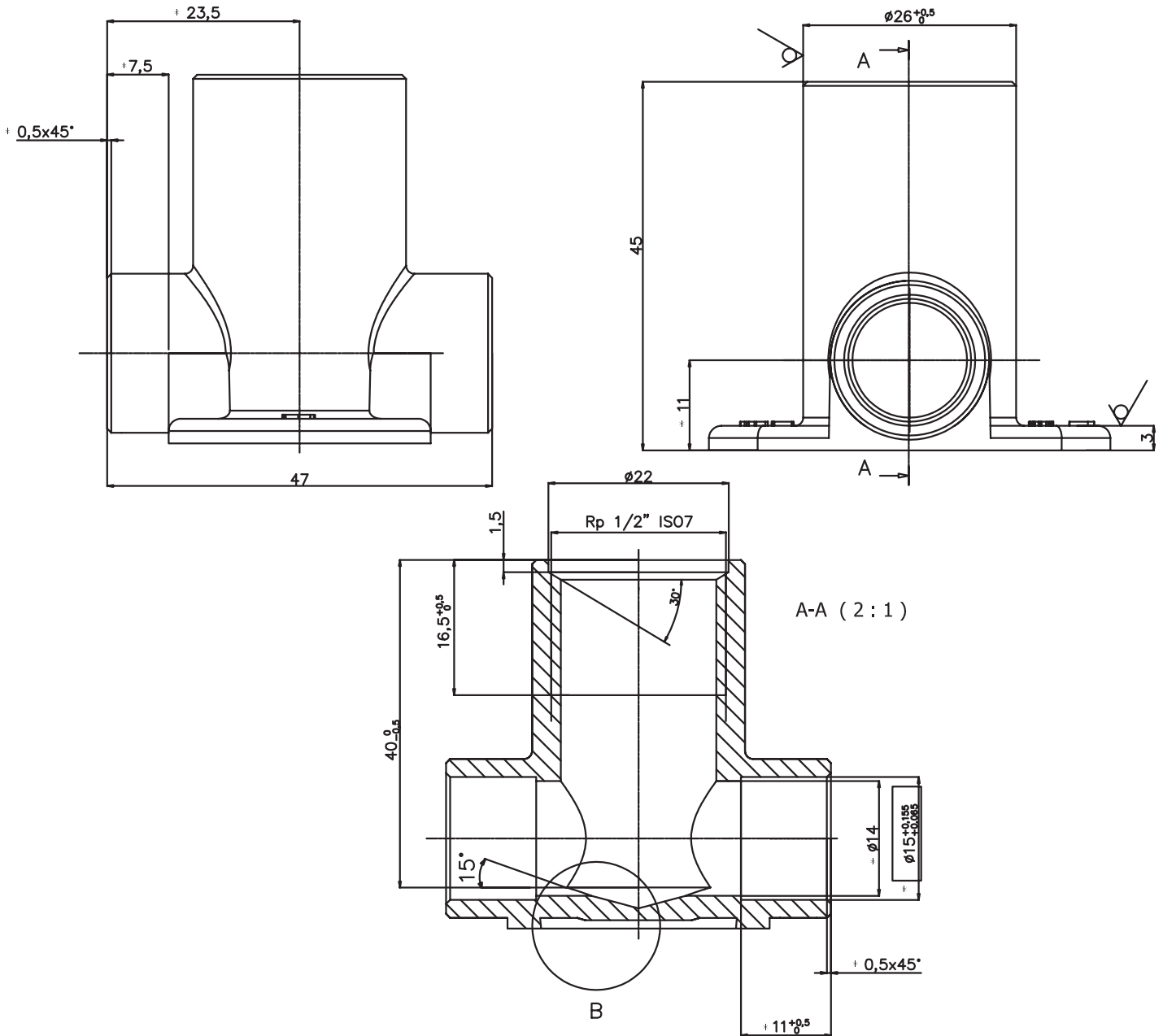
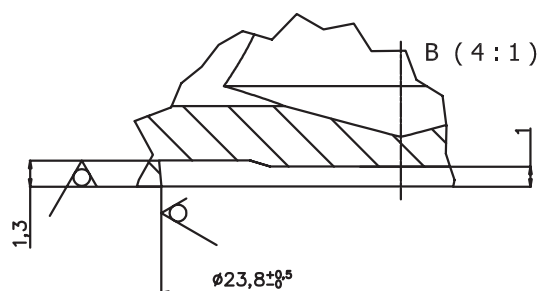
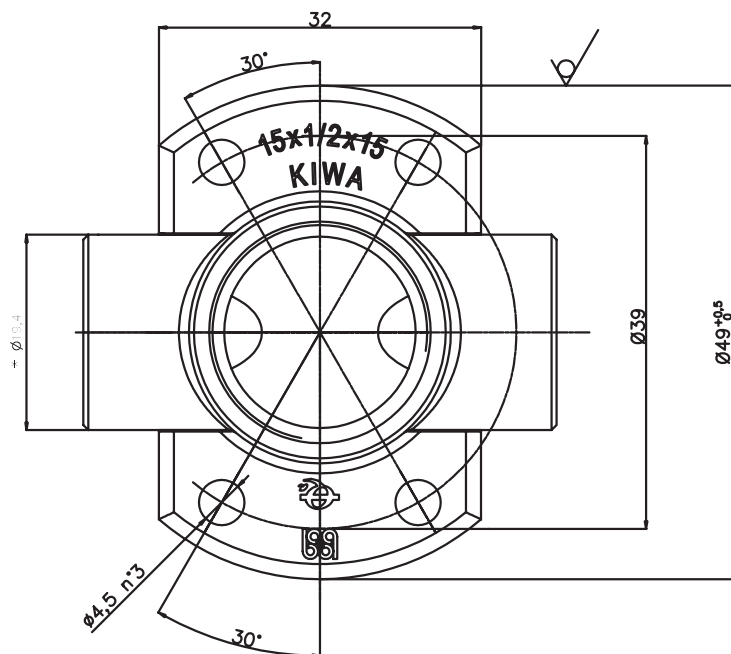


No rights can be derived from these drawings. The sizes may differ in reality.

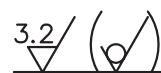
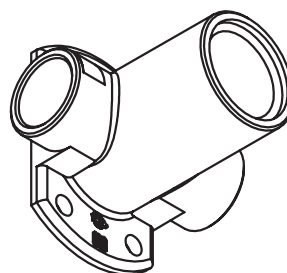


| | | | | | |
|--|--|---|---------------------|--------------------------|-----------------------|
| | | | | | |
| DESCRIZIONE DESCRIPTION | | Muurplaat hoog 15 x 1/2" binnen x 15 - flangia a muro alta doppia a saldare | REV. _____ | | |
| | | | SCALA SCALE | 2 : 1 | |
| CODICE GRUPPO ASSEMBLED PART NR. _____ | | MATERIALE MATERIAL | UNI EN 12165-CW617N | | |
| TRATTAMENTI TREATMENTS | | Ottonato - brass blasted | | | |
| NOTE REMARKS _____ | | GENERAL TOLERANCES ±0.2 NOT SPECIFIED RADII R=1 SHARP EDGES WITHOUT BURRS SM 0.2X45° | | PESO STAMPATO GRO. W. | PESO FINITO NET W. |
| <div></div> CARATTERISTICA IMPORTANTE KEY FEATURE | | | | Gr.* | Gr. 136 |

No rights can be derived from these drawings. The sizes may differ in reality.



VISTA ASSONOMETRICA
SCALA 1:1



| | | | |
|---|--|--------------------------------------|--------------------------------------|
| | | | |
| DESCRIZIONE DESCRIPTION <u>Muurplaat hoog 15 x 1/2" binnen x 15 - flangia a muro alta doppia a saldare</u> | | | REV. <u> </u> |
| | | SCALA SCALE <u>2 : 1</u> | |
| CODICE GRUPPO ASSEMBLED PART NR. <u> </u> | MATERIALE MATERIAL <u>UNI EN 12165-CW617N</u> | | |
| TRATTAMENTI TREATMENTS <u>Ottonato - brass blasted</u> | GENERAL TOLERANCES ± 0.2 NOT SPECIFIED RADII $R=1$ SHARP EDGES WITHOUT BURRS SM 0.2x45° | | |
| NOTE REMARKS <u> </u> | | | |
| <input type="checkbox"/> CARATTERISTICA IMPORTANTE KEY FEATURE | | PESO STAMPATO GRO. W. <u>Gr.*</u> | PESO FINITO NET W. <u>Gr. 136</u> |